



May 18, 2015

Ms. Mary Jo Kunkle  
Executive Secretary  
Michigan Public Service Commission  
7109 W Saginaw Hwy  
Lansing, MI 48917

Re: MPSC Case No. U-12134 – Code of Conduct, Section VI, Paragraph C  
Organizational Chart of Parent Company

Dear Ms. Kunkle:

Enclosed for filing is DTE Electric Company's Code of Conduct Compliance Report on the organizational chart of the parent or holding company, as required by the October 29, 2001 order issued by the Michigan Public Service Commission in Case No. U-12134.

This document is submitted to comply with Section VI – Compliance Plans, Paragraph C of the October 29, 2001 Order issued by the Michigan Public Service Commission in Case No. U-12134 approving a Code of Conduct for the DTE Electric Company.

Very truly yours,

Ray Seidl  
Manager  
Regulatory Adjudication and Compliance

Enclosure

Name of Respondent	This Report Is:	Date of Report	Year of Report
DTE Electric Company	(1) <input checked="" type="checkbox"/> An Original (2) <input type="checkbox"/> A Resubmission	(Mo, Da, Yr)	2014/Q4

**CONTROL OVER RESPONDENT & OTHER ASSOCIATED COMPANIES**

1. If any corporation, business trust, or similar organization or combination of such organization jointly held control over respondent at the end of year, state name of controlling corporation or organization, manner in which control was held, and extent of control. If control was in a holding company organization, show the chain of ownership or control to the main parent company or organization. If control was held by a trustee(s), state name of trustee(s), name of beneficiary or beneficiaries for whom trust was maintained, and purpose of the trust.
2. List any entities which respondent did not control either directly or indirectly and which did not control respondent, but which were associated companies at any time during the year.

*On January 1, 1996 DTE Energy Company became the parent company of the respondent.*  
The attached pages 102a - 102p detail DTE Energy Company holdings including chain of ownership and control.

## I. NATURE OF BUSINESS OF CLAIMANTS AND EVERY SUBSIDIARY THEREOF

### Claimant: DTE Energy Company

DTE Energy Company (“Company” or “DTE”) is a Michigan corporation. DTE owns, directly and indirectly, three utilities, DTE Electric Company, (“DTE Electric”), DTE Gas Company, (“DTE Gas”), and Citizens Gas Fuel Company (“Citizens”), and non-regulated subsidiaries engaged in energy marketing and trading, energy services, and various other electricity, coal and gas related businesses. The Company’s address is One Energy Plaza, Detroit, Michigan 48226-1279.

### Claimant: DTE Enterprises, Inc.

DTE Enterprises, Inc. (“DTEE”) owns, directly and indirectly, two utilities, DTE Gas and Citizens, and non-regulated subsidiaries primarily involved in natural gas production, gathering, processing, transmission, storage, distribution and marketing in the Midwest-to-Northeast corridor. DTEE is organized under the laws of the state of Michigan and has its principal executive offices at One Energy Plaza, Detroit, Michigan 48226-1279.

### Claimant: DTE Gas Holdings, Inc.

DTE Gas Holdings, Inc., (“Gas Holdings”), is the holding company for DTE Gas Company and DTE Gas Services Company, (“Gas Services”). Gas Holdings is organized under the laws of the state of Michigan and has its principal executive offices located at One Energy Plaza, Detroit, Michigan 48226-1279.

#### 1. DTE Energy Company

- A. DTE Energy Corporate Services, LLC, (“Corporate Services”), is a Michigan limited liability company. Corporate Services is a wholly owned subsidiary of DTE Energy Company with offices at One Energy Plaza, Detroit, Michigan 48226-1279. Corporate Services provides functional support to the DTE Energy enterprise.
- B. DTE Energy Resources, LLC, (“DTE ER”), is a Delaware limited liability company. DTE ER is a wholly owned subsidiary of the Company with offices at 414 S. Main, Ann Arbor, Michigan 48104. DTE ER is engaged in energy services, electric generation, electric and gas marketing and trading and landfill gas projects.
  1. DTE Biomass Energy, Inc., (“DTE Biomass”) is a Michigan corporation with offices at 425 S. Main, Ann Arbor, Michigan 48104. DTE Biomass is a wholly owned subsidiary of DTE ER and is engaged in landfill gas projects
    - a. Adrian Energy Associates, LLC, (“Adrian Energy”) is a Michigan limited liability company with offices at 29261 Wall Street, Wixom, Michigan 48393. Adrian Energy is a 50% owned subsidiary of DTE Biomass and is engaged in the production of electricity from landfill gas.
    - b. Bellefontaine Gas Producers, L.L.C., (“Bellefontaine Gas”) is a Delaware company with offices at 425 S. Main, Ann Arbor, Michigan 48104. Bellefontaine Gas is a 50% owned subsidiary of DTE Biomass and is engaged in landfill gas projects.
    - c. Blue Water Renewables, Inc., (“Blue Water”), is a Michigan company with offices located at 425 S. Main, Ann Arbor, Michigan 48104 is a wholly owned subsidiary of DTE Biomass and is engaged in landfill gas projects.
    - d. Davidson Gas Producers, LLC, (“Davidson”), is a Michigan limited liability company with offices at 425 S. Main, Ann Arbor, Michigan 48104. Davidson is a wholly owned subsidiary of DTE Biomass and is engaged in landfill projects.

- e. Denton Power, LLC, (Denton) is a Michigan limited liability company with offices at 425 S. Main, Ann Arbor, Michigan 48104. Denton is a wholly owned subsidiary of DTE Biomass and is engaged in landfill projects.
- f. DTE Methane Resources, L.L.C., (“DTE Methane”) is a Michigan company with offices at 425 S. Main St., Ann Arbor, Michigan 48104. DTE Methane is a wholly owned subsidiary, 50% by DTE Biomass and 50% by DTE Coal Services, and is an inactive company.
- g. Enerdyne LTD, LLC, is a North Carolina limited liability company with offices at 425 S. Main, Ann Arbor, Michigan 48104. Enerdyne LTD is a wholly owned subsidiary of DTE Biomass and owns 100% of Eagle Hill Renewable Energy, LLC.
  - i. Eagle Hill Renewable Energy, LLC, (“Eagle Hill”), is a Virginia limited liability company with offices at 425 S. Main, Ann Arbor, Michigan 48104. Eagle Hill is wholly owned by Enerdyne LTD, LLC. Assets sold January 2, 2015 and entity is inactive.
- h. Enerdyne TEN, LLC, is a Virginia limited liability company with offices at 425 S. Main, Ann Arbor, Michigan 48104. Enerdyne TEN, LLC is 75.5% owned by DTE Biomass and owns King George Gas Producers, LLC.
  - i. King George Gas Producers, LLC, is a Virginia limited liability company with offices at 425 S. Main, Ann Arbor, Michigan 48104. King George is wholly owned by Enerdyne TEN, LLC.
- i. Fayetteville Gas Producers, L.L.C., (“Fayetteville”), is a North Carolina limited liability company with offices located at 425 S. Main, Ann Arbor, Michigan, 48104. Fayetteville is a wholly owned subsidiary of DTE Biomass and is engaged in landfill gas projects.
- j. Iredell Transmission, LLC, (“Iredell Trans”) is a North Carolina limited liability company with offices at 425 S. Main, Ann Arbor, Michigan 48104. Iredell is wholly owned by DTE Biomass and is engaged in landfill gas projects.
- k. Kiefer Landfill Generating II, LLC, (“Kiefer”) is a Michigan limited liability company with offices at 425 S. Main, Ann Arbor, Michigan 48104. Kiefer is a 10% owned subsidiary of DTE Biomass and is engaged in landfill projects.
- l. Montgomery Gas Producers, L.L.C., (“Montgomery”) is a Michigan limited liability company with offices at 425 S. Main, Ann Arbor, Michigan 48104. Montgomery is a wholly owned subsidiary of DTE Biomass and is engaged in landfill gas projects.
- m. Oklahoma Gas Producers, L.L.C., (“Oklahoma”) is a Michigan limited liability company with offices at 425 S. Main, Ann Arbor, Michigan 48104. Oklahoma is a wholly owned subsidiary of DTE Biomass and is engaged in landfill gas projects.
- n. Orlando Gas Producers, Inc., (“Orlando”) is a Michigan corporation with offices at 425 S. Main, Ann Arbor, Michigan 48104. Orlando is a wholly owned subsidiary of DTE Biomass and is engaged in landfill gas projects. This entity was dissolved, effective July 14, 2014.
- o. Phoenix Gas Producers, L.L.C., (“Phoenix”) is a Michigan limited liability company with offices at 425 S. Main, Ann Arbor, Michigan 48104. Phoenix is a wholly owned subsidiary of DTE Biomass and is engaged in landfill gas projects.

- p. Pinnacle Gas Producers, L.L.C., (“Pinnacle”) is a Michigan limited liability company with offices at 425 S. Main, Ann Arbor, Michigan 48104. Pinnacle is a wholly owned subsidiary of DTE Biomass and is engaged in a landfill gas-to-energy project.
- q. Potrero Hills Energy Producers, LLC, (“Potrero”), is a Delaware limited liability company with offices at 425 S. Main, Ann Arbor, Michigan, 48104. Potrero is a 50% owned subsidiary of DTE Biomass and is engaged in landfill gas projects.
- r. Raleigh Steam Producers, LLC, (“Raleigh”), is a North Carolina limited liability company with offices at 425 S. Main, Ann Arbor, Michigan 48104. Raleigh is a 50% owned subsidiary of DTE Biomass and is engaged in production of steam from landfill gas.
- s. RES Power, Inc., (“RESP”) is a Michigan corporation with offices at 425 S. Main, Ann Arbor, Michigan 48104. RESP is a wholly owned subsidiary of DTE Biomass and is engaged in landfill gas projects. It owns 50% of Riverview Energy Systems.
  - i. Riverview Energy Systems, (“Riverview”) is a Michigan partnership with offices at 29261 Wall Street, Wixom, Michigan 48393. Riverview is a 50% owned subsidiary of RESP and is engaged in the production of electricity from landfill gas.
- t. Riverview Gas Producers, Inc., (“Riverview”) is a Michigan corporation with offices at 425 S. Main, Ann Arbor, Michigan 48104. Riverview is a wholly owned subsidiary of DTE Biomass and is engaged in landfill gas projects.
- u. Salem Energy Systems, LLC, (“Salem”) is a North Carolina limited liability company with offices at 29261 Wall Street, Wixom, Michigan 48393. Salem is 50% owned by DTE Biomass and is engaged in the production of electricity from landfill gas.
- v. Salt Lake Energy Systems, L.L.C., (“Salt Lake”) is a Michigan limited liability company with offices at 425 S. Main, Ann Arbor, Michigan 48104. Salt Lake is a 50% owned subsidiary of DTE Biomass and is engaged in a landfill gas-to-energy project.
- w. Sunshine Gas Producers, LLC is a Michigan limited liability company with offices at 425 S. Main, Ann Arbor, Michigan 48104. Sunshine Gas is a 50% owned subsidiary of DTE Biomass and is engaged in landfill projects.
- x. Wake Gas Producers, L.L.C., (“Wake”) is a North Carolina limited liability company with offices at 425 S. Main, Ann Arbor, Michigan 48104. Wake is a wholly owned subsidiary of DTE Biomass and is engaged in landfill gas projects.
- y. Uwharrie Mountain Renewable Energy, LLC., (“Uwharrie”), formerly Elements Markets LFG, LLC, is a Delaware limited liability company with offices at 425 S. Main, Ann Arbor, Michigan 48014. Uwharrie is a wholly owned subsidiary of DTE Biomass and is a landfill gas facility.
- z. Westside Gas Producers, L.L.C., (“Westside”) is a Michigan limited liability company with offices at 425 S. Main, Ann Arbor, Michigan 48104. Westside is a wholly owned subsidiary of DTE Biomass and is engaged in landfill gas projects.
- aa. Wichita Gas Producers, L.L.C., (“Wichita”), is a Michigan limited liability company with offices at 425 S. Main, Ann Arbor, Michigan 48104. Wichita is a 90% owned subsidiary of DTE Biomass and is engaged in acquiring rights to, developing, collecting and selling landfill gas and related constituent products. This company was dissolved, effective December 16, 2014.

2. DTE Coal Services, Inc., (“DTE Coal”) is a Michigan corporation with offices at 414 S. Main, Ann Arbor, Michigan 48104. DTE Coal is a wholly owned subsidiary of DTE ER and is engaged in selling and transporting coal to third parties.
  - a. DTE Carbon, LLC, (“Carbon”), is a Delaware limited liability company with offices at 414 S. Main, Ann Arbor, Michigan, 48104. Carbon is a wholly owned subsidiary of DTE Coal and is engaged in the buying, selling or trading greenhouse gas related credits and other related instruments
  - b. DTE Chicago Fuels Terminal, LLC, (“Chicago Fuels”), is a Michigan limited liability company with offices at 414 S. Main, Ann Arbor, Michigan 48104. This company is a wholly owned subsidiary of DTE Coal and is an inactive company.
  - c. DTE Peptec, Inc., (“DTE Peptec”) is a Michigan corporation with offices at 414 S. Main, Ann Arbor, Michigan 48104. DTE Peptec is a wholly owned subsidiary of DTE Coal and is involved in coal preparation and cleaning activities.
    - i. Peptec, Inc. (“Peptec”) is a Pennsylvania corporation with offices at 414 S. Main, Ann Arbor, Michigan 48104. Peptec is a wholly owned subsidiary of DTE Peptec.
  - d. DTE Rail Holdings I, Inc., (“Rail Holdings I”), is a Michigan corporation with offices at 414 S. Main, Ann Arbor, Michigan 48104. Rail Holdings I, is a wholly owned subsidiary of DTE Coal and is an inactive company.
  - e. DTE Rail Holdings II, LLC, (“Rail Holdings II”), is a Michigan limited liability company with offices at 414 S. Main, Ann Arbor, Michigan 48104. Rail Holdings II is a wholly owned subsidiary of DTE Coal Services, Inc. and is an inactive company.
  - f. Omni Coal Group, LLC, (“Omni”), is a Delaware limited liability company with offices at 414 S. Main, Ann Arbor, Michigan, 48104. Omni is wholly owned by DTE Coal and is an inactive company.
3. DTE Energy Services, Inc. (“DTE ES”), is a Michigan corporation with offices at 414 S. Main, Ann Arbor, Michigan 48104. DTE ES is a wholly owned subsidiary of DTE ER and is engaged in energy services activities.
  - a. Delta Township Utilities, LLC, (“Delta Township”) is a Delaware limited liability company with offices at 414 S. Main, Ann Arbor, Michigan, 48104. Delta Township is wholly owned by DTE ES. It operates and maintains a facility that provides a primary switch house and associated equipment, electrical distribution and unit substations, etc. for a metal stamping facility in Lansing, Michigan.
  - b. Delta Township Utilities II, LLC, (“Utilities II”) is a Delaware limited liability company with offices at 414 S. Main, Ann Arbor, Michigan, 48104. Utilities II is owned 56% by DTE ES. It provides utility services to an automobile manufacturing facility in Lansing, MI.
  - c. DTE Ashtabula, LLC, (“Ashtabula”) is a Delaware limited liability company with offices at 414 S. Main, Ann Arbor, Michigan, 48104. Ashtabula is wholly owned by DTE ES. It operates 5 Co-Generation units that provide steam, electricity, boiler feed water and compressed air to a facility in Ashtabula Ohio.
  - d. DTE Backup Generation Equipment Leasing, L.L.C., (“Backup Generation Equipment Leasing”) is a Delaware limited liability company with offices at 414 S. Main, Ann Arbor, Michigan, 48104.

Backup Generation Equipment Leasing is a wholly owned subsidiary of DTE ES, and is engaged in the equipment leasing business.

- e. DTE Boca Raton, LLC, (“Boca”) is a Delaware limited liability company with offices at 414 S. Main, Ann Arbor, Michigan, 48104. Boca is a wholly owned subsidiary of DTE ES. It operates a district cooling plant and related services to Boca Corporate Center.
- f. DTE Calvert City, LLC, (“DTE Calvert”), is a Delaware limited liability company with offices at 414 S. Main, Ann Arbor, Michigan 48104. Calvert is a wholly owned subsidiary of DTE ES and is anticipated to be engaged in the operation of an onsite power facility in Kentucky.
- g. DTE Coke Holdings, LLC, (“Coke Holdings”) is a Delaware limited liability company with offices at 414 S. Main, Ann Arbor, Michigan 48104. Coke Holdings is a wholly owned subsidiary of DTE ES and is a holding company.
  - i. Burns Harbor Fuels Company, LLC, (“Harbor Fuels”), is a Delaware limited liability company with offices at 414 S. Main, Ann Arbor, Michigan 48104. Harbor Fuels is 51% owned by Coke Holdings and is an inactive company. This company was dissolved, effective 5/28/2014.
  - ii. Shenango Incorporated, (“Shenango”), is a Pennsylvania corporation with offices at 414 S. Main, Ann Arbor, Michigan 48104. Shenango is a wholly owned subsidiary of Coke Holdings and operates a coke battery facility. Shenango owns 100% of Neville Coke, LLC.
    - a) Neville Coke, LLC, (“Neville”) is a Delaware limited liability company with offices at 414 S. Main, Ann Arbor, Michigan 48104. Neville is owned 100% by Shenango. Neville is engaged in coke supply.
  - iii. Neville Island Fuels Company, LLC, (“Neville Island”), is a Delaware limited liability company with offices at 414 S. Main, Ann Arbor, Michigan 48104. Neville Island is owned 49% by Coke Holdings. Neville Island is an inactive company. This company was dissolved effective 5/27/14 (withdrawal from Pennsylvania is pending).
  - iv. Zug Islands Fuels Company, LLC, (“Zug Island”), is a Delaware limited liability company with offices at 414 S. Main, Ann Arbor, Michigan 48104. Zug Island is 49% owned by Coke Holdings and is an inactive company. This company was dissolved, effective May 27, 2014.
- h. DTE Coke Operations, LLC, (“DTE Coke”) is a Michigan limited liability company with offices at 414 S. Main, Ann Arbor, Michigan 48104. DTE Coke is a wholly owned subsidiary of DTE ES and is involved in in the operation and maintenance of coke battery facilities.
- i. DTE Coolco, LLC, (“Coolco”) is an Ohio limited liability company with offices at 414 S. Main, Ann Arbor, Michigan 48104. Coolco is a wholly owned subsidiary of DTE ES. It operates a district cooling plant providing chilled water to various customers within the Cincinnati Central Business District. DTE Coolco was sold, effective June 2, 2014.
- j. DTE Dearborn, LLC, (“Dearborn”), is a Delaware limited liability company with offices at 414 S. Main, Ann Arbor, Michigan 48104. Dearborn is a wholly owned subsidiary of DTE ES and is engaged in the development and operation of a compressed air facility.
- k. DTE East China, LLC, (“East China”), is a Michigan limited liability company with offices at 414 S. Main Street, Ann Arbor, Michigan 48104. East China is a wholly owned subsidiary of DTE ES and is engaged in electricity generation.
- l. DTE East China Operations, LLC, (“East China Operations”) is a Delaware limited liability company, with offices at 414 S. Main, Ann Arbor, Michigan 48104. East China Operations is a

wholly owned subsidiary of DTE ES, and is engaged in the operation and maintenance of an electric generation facility.

- m. DTE Energy Center Operations, LLC, (“DTE Energy Cent Oper”) is a Delaware limited liability company with offices at 414 S. Main, Ann Arbor, Michigan 48104. DTE Energy Cent Oper is a wholly owned subsidiary of DTE ES and is involved in the operation of Energy Center.
- n. DTE ES Holdings No. 1, LLC, (“ES Holdings”) is a Delaware limited liability company with offices at 414 S. Main Street, Ann Arbor Michigan 48104. ES Holdings is a wholly owned subsidiary of DTE ES and is a holding company.
- o. DTE ES Operations, LLC, (“ES Oper”), is a Delaware limited liability company with offices at 414 S. Main Street, Ann Arbor, Michigan 48104. ES Oper is a wholly owned subsidiary of DTE ES and is engaged in the operation and maintenance of electric generation facilities.
- p. DTE Lansing, LLC, (“Lansing”) is a Delaware limited liability company with offices at 414 S. Main Street, Ann Arbor Michigan 48104. It is wholly owned by DTE ES and it operates and maintains a Central Utilities Complex (“CUC”) providing utility services to 3 buildings at the Grand River Assembly Facility. Lansing owns 80% of Utility Services of Lansing, LLC.
  - i. Utility Services of Lansing, LLC, (“Utility Services”) is a Delaware limited liability company with offices at 414 S. Main, Ann Arbor, Michigan 48104. Utility Services is owned 80% by Lansing and provides utility services to a facility in Lansing, Michigan
- q. DTE Mobile Operations, LLC, (“DTE Mobile”), is a Delaware limited liability company with offices at 414 S. Main, Ann Arbor, Michigan 48104. DTE Mobile is a wholly owned subsidiary of DTE ES and is involved in the operation of Mobile Energy.
- r. DTE On-Site Energy, LLC, (“On-Site”) is a Delaware limited liability company with offices at 414 S. Main, Ann Arbor, Michigan, 48104. DTE On-Site is a wholly owned subsidiary of DTE ES and is involved in on-site energy projects.
  - i. Energy & Industrial Utilities Company, LLC, (“EIUC”) is a Delaware limited liability company with offices at 414 S. Main, Ann Arbor, Michigan 48104. EIUC is a wholly owned subsidiary of On-Site and is a holding company.
    - a) DTE Burns Harbor Holdings, LLC, (“Burns Harbor Holdings”) is a Delaware limited liability company with offices at 414 S. Main, Ann Arbor, Michigan 48104. Burns Harbor Holdings is a wholly owned subsidiary of EIUC. Burns Harbor Holdings owns 51% of DTE Burns Harbor, L.L.C.
      - i. DTE Burns Harbor, L.L.C., (“DTE Burns Harbor”) is a Delaware limited liability company with offices at 414 S. Main, Ann Arbor, Michigan 48104. DTE Burns Harbor is 51% owned by Burns Harbor Holdings and operates a coke battery facility.
    - b) DTE Defiance, LLC, is an Ohio limited liability company with offices at 414 S. Main, Ann Arbor, Michigan 48104. DTE Defiance is a wholly owned subsidiary of EIUC and is engaged in the development and operation of a compressed air facility.
    - c) DTE Heritage, LLC, (“DTE Heritage”) is a Michigan limited liability company with offices at 414 S. Main, Ann Arbor, Michigan 48104. DTE Heritage is a wholly owned subsidiary of EIUC and is engaged in the ownership and operation of an internal electric distribution system of electricity.

- d) DTE Indiana Harbor Holdings, LLC, (“DTE Indiana Harbor”) is a Delaware limited liability company with offices at 414 S. Main, Ann Arbor, Michigan 48104. DTE Indiana Harbor is a wholly owned subsidiary of EIUC. DTE Indiana Harbor owns 5% of Indiana Harbor Coke Company L.P.
- i. Indiana Harbor Coke Company L.P. , (“Indiana Harbor Coke Company”) is a Delaware limited partnership with offices at 414 S. Main, Ann Arbor, Michigan 48104. Indiana Harbor Coke Company is 5% owned by Indiana Harbor Holdings, LLC and operates a coke battery facility.
- e) DTE Lordstown, LLC, (“Lordstown”), is an Ohio limited liability company with offices at 414 S. Main, Ann Arbor, Michigan 48104. DTE Lordstown is a wholly owned subsidiary of EIUC and is engaged in the development and operation of a compressed air facility.
- f) DTE Northwind, LLC, (“Northwind”) is a Delaware limited liability company with offices at 414 S. Main, Ann Arbor, Michigan 48104. Northwind is a wholly owned subsidiary of EIUC and operates a chilled water plant.
- g) DTE PCI Enterprises Company, LLC, (“DTE PCI”) is a Delaware limited liability company with offices at 414 S. Main, Ann Arbor, Michigan 48104. DTE PCI is a wholly owned subsidiary of EIUC and operates a pulverized coal facility.
- h) DTE Pittsburgh, LLC, (“Pittsburgh”) is a Delaware limited liability company with offices at 414 S. Main, Ann Arbor, Michigan 48104. Pittsburgh is a wholly owned subsidiary of EIUC. It is involved in the development & ownership of on-site energy projects
- i) DTE Pontiac North, LLC, (“Pontiac”), is a Michigan limited liability company with offices at 414 S. Main Street, Ann Arbor, Michigan 48104. Pontiac is a wholly owned subsidiary of EIUC.
- j) DTE Sparrows Point, L.L.C., (“Sparrows Point”) is a Delaware limited liability company with offices at 414 S. Main, Ann Arbor, Michigan 48104. Sparrows Point is a wholly owned subsidiary of EIUC and is an inactive company,
- k) DTE Tonawanda, LLC, (“Tonawanda”) is a Michigan limited liability company with offices at 414 S. Main, Ann Arbor, Michigan 48104. Tonawanda is a wholly owned subsidiary of EIUC and is engaged in wastewater treatment and supply of chilled water.
- l) EES Coke Battery, L.L.C., (“EES”) is a Michigan limited liability company with offices at 414 S. Main, Ann Arbor, Michigan 48104. EES is wholly owned by EIUC and is engaged in coke supply.
- m) Metro Energy, LLC, is a Michigan limited liability company with offices at 414 S. Main Street, Ann Arbor, Michigan 48104. Metro Energy, LLC is a wholly owned subsidiary of EIUC and provides energy related services.
- ii. DTE Marietta, LLC., (“Marietta”) is a Delaware limited liability company with offices at 414 S. Main Street, Ann Arbor, Michigan 48104. It is a wholly owned subsidiary of On-Site and it holds project contracts to provide energy related services.

- s. DTE PetCoke, LLC, (“Pet Coke”), is a Delaware limited liability company with offices at 414 S. Main Street, Ann Arbor, Michigan 48104. Pet Coke is wholly owned subsidiary of DTE ES, and is engaged in the supply of petroleum coke.
- t. DTE Philadelphia, LLC, (“Philadelphia”) is a Delaware limited liability company with offices at 414 S. Main Street, Ann Arbor, Michigan 48104. Philadelphia is a wholly owned subsidiary of DTE ES. It operates and maintains the electric distribution, heat and non-potable water systems for the Philadelphia Authority for Industrial Development.
- u. DTE Pulp & Paper Holdings, LLC, (“DTE Pulp”), is a limited liability Delaware company with offices at 414 S. Main Street, Ann Arbor, Michigan 48104. DTE Pulp is a wholly owned subsidiary of DTE ES and is a holding company. DTE Pulp owns 50% of MESC Capital, LLC
  - i. MESC Capital, LLC, (“MESC Cap”), is a Delaware limited liability company with offices at 414 S. Main Street, Ann Arbor, Michigan 48104. MESC Cap is 50% owned by DTE Pulp and is involved in financing and investing activities. MESC Cap owns Mobile Energy Services Company, LLC.
    - a) Mobile Energy Services Company, LLC, (“Mobile Energy”) is an Alabama limited liability company with offices at 414 S. Main, Ann Arbor, Michigan 48104. Mobile Energy is a wholly owned subsidiary of MESC Cap and owns and operates the energy and recovery complex and related facilities located at the pulp and tissue mill in Mobile, Alabama.
  - ii. DTE Open-Loop Biomass, LLC, (“Open Loop”) is a Delaware limited liability company with offices at 414 S. Main, Ann Arbor, Michigan 48104. It is wholly owned by DTE Pulp and Paper Holdings and is engaged in the operation of a black liquor recovery boiler. This company was dissolved, effective August 8, 2014.
- v. DTE REF Holdings, LLC, (“DTE REF”), is a Delaware limited liability company with offices at 414 S. Main, Ann Arbor, Michigan 48104. It is a wholly owned subsidiary of DTE ES and is a holding company.
  - i. Belle River Fuels Holdings, LLC, (“Belle River Fuels”), is a Delaware limited liability company with offices at 414 S. Main, Ann Arbor, Michigan 48104. Belle River Fuels is owned 1% by DTE REF and 99% by DTE ES. Belle River Fuels owns and operates a facility for the production of refined coal. Belle River Fuels owns 100% of Belle River Fuels Company, LLC.
    - a) Belle River Fuels Company, LLC, (“Belle River”) is a Delaware limited liability company with offices at 414 S. Main, Ann Arbor, Michigan, 48104. Belle River is a wholly owned subsidiary of Belle River Fuels and it owns and operates a facility for the production of refined coal.
  - ii. Belle River REF No. 2, LLC, (“Belle River REF 2”), is a Delaware limited liability company with offices at 414 S. Main, Ann Arbor, Michigan, 48104. . It is a wholly owned subsidiary of DTE REF. Belle River REF 2 owns and operates a facility for the production of refined coal.
  - iii. DTE REF Holdings II, LLC., (“REF Holdings II”) is a Delaware limited liability company with offices at 414 S. Main, Ann Arbor, Michigan 48104. It is wholly owned by DTE REF and is a holding company with 21% interest in Canton Fuels Company, LLC and 1% interest in Chouteau Fuels Company, LLC.

- a) Canton Fuels Company, LLC, (“Canton”), is a Delaware limited liability company with offices at 414 S. Main, Ann Arbor, Michigan, 48104. REF Holdings II owns 21% of Canto and it operates a refined emissions fuel facility.
- b) Chouteau Fuels Company, LLC, (“Chouteau”), is a Delaware limited liability company with offices at 414 S. Main, Ann Arbor, Michigan, 48104. REF Holdings II owns 1% of and it operates a refined emissions fuel facility.
- iv. DTE REF Management Company, LLC, is a Delaware limited liability company with offices at 414 S. Main, Ann Arbor, Michigan, 48104. It is wholly owned by DTE REF Holdings, LLC and is a holding company for the management of a refined coal facility.
- v. Gallia Fuels Company, LLC, (“Gallia”), is a Delaware limited liability company with offices at 414 S. Main, Ann Arbor, Michigan, 48104. Gallia is a wholly owned subsidiary of DTE REF and operates a refined emissions fuel production line.
- vi. Jasper Fuels Company, LLC, (“Jasper”), is a Delaware limited liability company with offices at 414 S. Main, Ann Arbor, Michigan 48104. Jasper is a wholly owned subsidiary of DTE REF. Jasper owns and operates a facility for the production of refined coal.
- vii. Kenosha Fuels Company, LLC, (“Kenosha”), formerly St. Clair REF No. 1, LLC, is a Delaware limited liability company with offices at 414 S. Main, Ann Arbor, Michigan, 48104. Kenosha is a wholly owned subsidiary of DTE REF. Kenosha owns and operates a facility for the production of refined coal.
- viii. Monroe Fuels Company, LLC, (“Monroe”), is a Delaware limited liability company with offices at 414 S. Main, Ann Arbor, Michigan, 48104. Monroe is 1% owned by DTE REF. It owns and operates a facility for the production of refined coal.
- ix. St. Clair Fuels Company, LLC, (“St. Clair Fuels”), is a Delaware limited liability company with offices at 414 S. Main Street, Ann Arbor, Michigan 48104. St. Clair Fuels is 1% owned DTE REF. St. Clair Fuels owns and operates a facility for the production of refined coal.
- w. DTE San Diego Cogen, Inc., (“San Diego Cogen”) is a Delaware company with offices at 414 S. Main, Ann Arbor, Michigan, 48104. San Diego Cogen is a wholly owned subsidiary of DTE ES. It operates and maintains a cogeneration facility in San Diego, California.
- x. DTE Silver Grove, LLC, (“Silver Grove”) is a Delaware limited liability company with offices at 414 S. Main, Ann Arbor, Michigan, 48104. Silver Grove is a wholly owned subsidiary of DTE ES. It provides electricity and hot air to a facility in Silver Grove, Kentucky. DTE Silver Grove was dissolved, effective August 8, 2014.
- y. DTE St. Bernard, LLC, (“St. Bernard”) is a Delaware limited liability company with offices at 414 S. Main, Ann Arbor, Michigan, 48104. St. Bernard is a wholly owned subsidiary of DTE ES. It provides steam, electricity, high density liquid processing, water, sewer, fuel and coal services to a facility in Cincinnati.
- z. DTE St. Paul, LLC, (“St. Paul”) is a Delaware limited liability company with offices at 414 S. Main, Ann Arbor, Michigan, 48104. St. Paul is a wholly owned subsidiary of DTE ES. It is part of a joint venture providing electricity from wood waste to biomass to Northern States Power Company. It owns 50% of St. Paul Cogeneration, LLC and 50% of Environmental Wood Supply, LLC.

- i. St. Paul Cogeneration, LLC, (“St. Paul Cogen”) is a Minnesota limited liability company with offices at 414 S. Main, Ann Arbor, Michigan, 48104. It is 50% owned by St. Paul. It provides electricity and heat through a wood-fired combined heat and power plant (CHP) to a state government complex.
- ii. Environmental Wood Supply, LLC, (“Environmental Wood”) is a Minnesota limited liability company with offices at 414 S. Main, Ann Arbor, Michigan, 48104. It is 50% owned by St. Paul. It provides electricity and heat through a wood-fired combined heat and power plant (CHP) to Northern States Power Company.
- aa. DTE Stoneman, LLC, (“Stoneman”) is a Wisconsin limited liability company with offices at 414 S. Main, Ann Arbor, Michigan 48104. Stoneman is a wholly owned subsidiary of DTE ES and is engaged in biomass energy projects.
- bb. DTE Tuscola, LLC, (“Tuscola”) is a Delaware limited liability company with offices at 414 S. Main Street, Ann Arbor, Michigan 48104. Tuscola is a wholly owned subsidiary of DTE ES. It is involved in the operation and maintenance of steam and power generation equipment at a facility in Tuscola, Illinois
- cc. DTE Utility Service Holdings, LLC (“Utility Serv”) is a Delaware limited liability company with offices at 414 S. Main Street, Ann Arbor, Michigan 48104. Utility Serv is a wholly owned subsidiary of DTE ES. It is involved in the operation of synthetic fuel facilities. Utility Serv owns 50% of DTE Energy Center, LLC
  - i. DTE Energy Center, LLC (“Energy Center”) is a Delaware limited liability company with offices at 414 S. Main Street, Ann Arbor, Michigan 48104. Energy Center is 50% owned by Utility Serv and is involved in providing utility and energy conservation services.
- dd. DTE Woodland, LLC (“Woodland”) is a Delaware limited liability company with offices at 414 S. Main, Ann Arbor, Michigan 48104. Woodland is a wholly owned subsidiary of DTE ES and is engaged in biomass energy projects. Woodland owns:
  - i. DTE Mt. Poso, LLC, (“Mt. Poso”) is a Delaware limited liability company with offices at 414 S. Main, Ann Arbor, Michigan 48104. Mt. Poso is a wholly owned subsidiary of Woodland and operates the Mt. Poso facility. Mt. Poso owns 50% of Mt. Poso Cogeneration Company, LLC
    - a) Mt. Poso Cogeneration Company, LLC, (“Mt. Poso Cogen”) is a Delaware limited liability company with offices at 414 S. Main, Ann Arbor, Michigan 48104. Mt. Poso Cogen is owned 50 % by Mt. Poso. Mt. Poso Cogen owns and operates a biomass energy facility and oil field.
  - ii. DTE Stockton, LLC, (“Stockton”), is a Delaware limited liability company with offices at 414 S. Main, Ann Arbor, Michigan 48104. Stockton is a wholly owned subsidiary of Woodland and is engaged in biomass energy projects.
  - iii. Woodland Biomass Power Ltd. is a California Limited Partnership company in which Woodland is the General Partner, with offices at 414 S. Main, Ann Arbor, Michigan 48104. This company is a wholly owned subsidiary of Woodland and is engaged in biomass energy projects.
- ee. Energy Equipment Leasing, LLC, (“Energy Equipment”), is a Delaware limited liability company with offices at 414 S. Main, Ann Arbor, Michigan 48104. Equipment Leasing is a wholly owned subsidiary of DTE ES and leases boiler and turning equipment to a facility near Baltimore, Maryland and cogeneration equipment to a facility in Ashtabula, Ohio.

2. DTE Energy Trading, Inc. (“DTE Energy Trading”), is a Michigan corporation with offices at 414 S. Main, Ann Arbor, Michigan 48104. DTE Energy Trading is a wholly owned subsidiary of DTE ER. DTE Energy Trading is engaged in wholesale and retail energy marketing. DTE Energy Trading owns DTE Energy Supply, Inc.
    - a. DTE Energy Supply, Inc. (“Energy Supply”), is a Michigan Corporation with offices at 414 S. Main, Ann Arbor, Michigan 48104. Energy Supply is a wholly owned subsidiary of DTE Energy Trading and is engaged in providing retail energy services.
  3. DTE Generation, Inc. (“DTE Generation”) is a Michigan corporation with offices at 414 S. Main, Ann Arbor, Michigan, 48104. DTE Generation is a wholly owned subsidiary of DTE ER and is a holding company. DTE Generation owns DTE River Rouge, No. 1, LLC.
    - a. DTE River Rouge, No. 1, LLC (“DTE River”) is a Michigan limited liability company with offices at 414 S. Main, Ann Arbor, Michigan, 48104. DTE River is a wholly owned subsidiary of DTE Generation and is involved in a project at River Rouge Power Plant.
- C. DTE Energy Trust III (“DTE III”) is a Delaware statutory trust with offices at One Energy Plaza, Detroit, Michigan 48226-1279. DTE III may offer from time to time trust preferred securities.
- D. DTE Energy Ventures, Inc. (“DTE Ventures”), is a Michigan corporation with offices at One Energy Plaza, Detroit, Michigan 48226-1279. DTE Ventures is a wholly owned subsidiary of DTE and is engaged in business development. DTE Energy Ventures, Inc. owns DTE Solar Company of California.
1. DTE Solar Company of California (“Solar”) is a Michigan corporation with offices at One Energy Plaza, Detroit, Michigan 48226-1279. Solar is a wholly owned subsidiary of DTE Ventures. Solar is engaged in solar photovoltaic leasing.
- E. DTE Enterprises, Inc. (“DTEE”) is a Michigan corporation with offices at One Energy Plaza, Detroit, Michigan 48226-1279. Except where otherwise indicated, DTEE owns, directly or indirectly, all of the outstanding common stock of DTE Gas Holdings, Inc., Citizens Gas Fuel Company (“Citizens”), and DTE Gas Enterprises, L.L.C., (“Gas Enterprises”).
1. Citizens Gas Fuel Company (“Citizens”), a Michigan corporation, is a public utility engaged in the distribution of natural gas in Michigan. Citizens’ principal executive offices are located at 127 N. Main Street, Adrian, Michigan 49221. Citizen’s is a wholly owned subsidiary of DTE Enterprises, Inc.
  2. DTE Gas Holdings, Inc., a Michigan corporation with offices at One Energy Plaza, Detroit, Michigan 48226-1279, is the holding company for DTE Gas Company, a Michigan corporation, and DTE Gas Services Company.
    - a) DTE Gas Services Company is a Michigan corporation with offices at One Energy Plaza, Detroit, Michigan 48226-1279. It markets natural gas as a vehicular fuel and markets energy to residential and commercial customers through a transportation brokerage pilot program. DTE Gas Services Company became inactive in 2001. DTE Gas Services Company is a wholly owned subsidiary of DTE Gas Holdings, Inc.
      - i. UtiliPro Services, LLC, (“UtiliPro”), is a Delaware limited liability company with offices at One Energy Plaza, Detroit, Michigan 48226-1279. It is owned 33.3% by DTE Gas Services Company and is engaged in home service contracts. This entity was cancelled, effective in 2011.

- b) DTE Gas Company, (“DTE Gas”), is a public utility engaged in the distribution and transmission of natural gas in the state of Michigan. DTE Gas’s principal executive offices are located at One Energy Plaza, Detroit, Michigan 48226-1279. DTE Gas conducts substantially all of its business in the state of Michigan and is subject to the jurisdiction of the Michigan Public Service Commission (“MPSC”) as to various phases of its operations, including gas sales rates, service, and accounting.
  - i. Blue Lake Holdings, Inc. (“Blue Lake”) is a Michigan corporation with offices at One Energy Plaza, Detroit, Michigan 48226-1279. Blue Lake Holdings, Inc. is a wholly owned subsidiary of DTE Gas. It holds a 25% interest in Blue Lake Gas Storage Company.
    - a) Blue Lake Gas Storage Company, (“Blue Lake Gas”), is a partnership that has converted a depleted natural gas field in northern Michigan into a 46 billion cubic feet (Bcf) natural gas storage field, which it operates.

---

3. DTE Gas Enterprises, LLC, (“DTEGS”), is the holding company for DTE’s various diversified energy subsidiaries. MCNEE, through its subsidiaries and joint ventures, provides gathering, processing and transmission services; engages in energy marketing activities and storage services; engages in gas and oil exploration, development and production; and is involved in other energy-related businesses. Except where otherwise indicated, the companies set forth below are wholly owned subsidiaries of DTEGS.

---

- a. DTE Gas Storage Company is a Michigan corporation with offices at One Energy Plaza, Detroit, Michigan 48226-1279. It engages in the storage of natural gas and is wholly owned by DTEGS.
  - i. Shelby Storage, L.L.C. is a Michigan limited liability company with offices at One Energy Plaza, Detroit, Michigan 48226-1279. It is used to procure storage, mineral and load rights for a storage field. Shelby Storage, L.L.C. is wholly owned by DTE Gas Storage Company
  - ii. South Romeo Gas Storage Company, L.L.C. (“South Romeo”) is a Michigan limited liability company with offices at One Energy Plaza, Detroit, Michigan 48226-1279. It is owned 50% by DTE Gas Storage Company. South Romeo holds a 33.3% interest in South Romeo Gas Storage Corporation.
    - a) South Romeo Gas Storage Corporation is a Michigan corporation which was formed to facilitate the development of the Washington 28 storage field. It is owned 33.3% by South Romeo Gas Storage Company, L.L.C. and 33.3% by DTE Gas Storage Company.
  - iii. Washington 10 Gas Holdings, Inc. is a Delaware corporation with offices at One Energy Plaza, Detroit, Michigan 48226. It is a wholly owned subsidiary of DTE Gas Storage Company.
    - a) Washington 10 Storage Corporation is a Michigan corporation with offices at One Energy Plaza, Detroit, Michigan 48226-1279. It is wholly owned by Washington 10 Gas Holdings, Inc.
  - iv. Washington 10 Storage Partnership is a Michigan partnership with offices at One Energy Plaza, Detroit, Michigan 48226-1279. The partnership is owned 50% by DTE Gas Storage Company and 50% by W-10 Holdings, Inc. The purpose of the partnership is to lease and operate the Washington 10 natural gas storage facility.

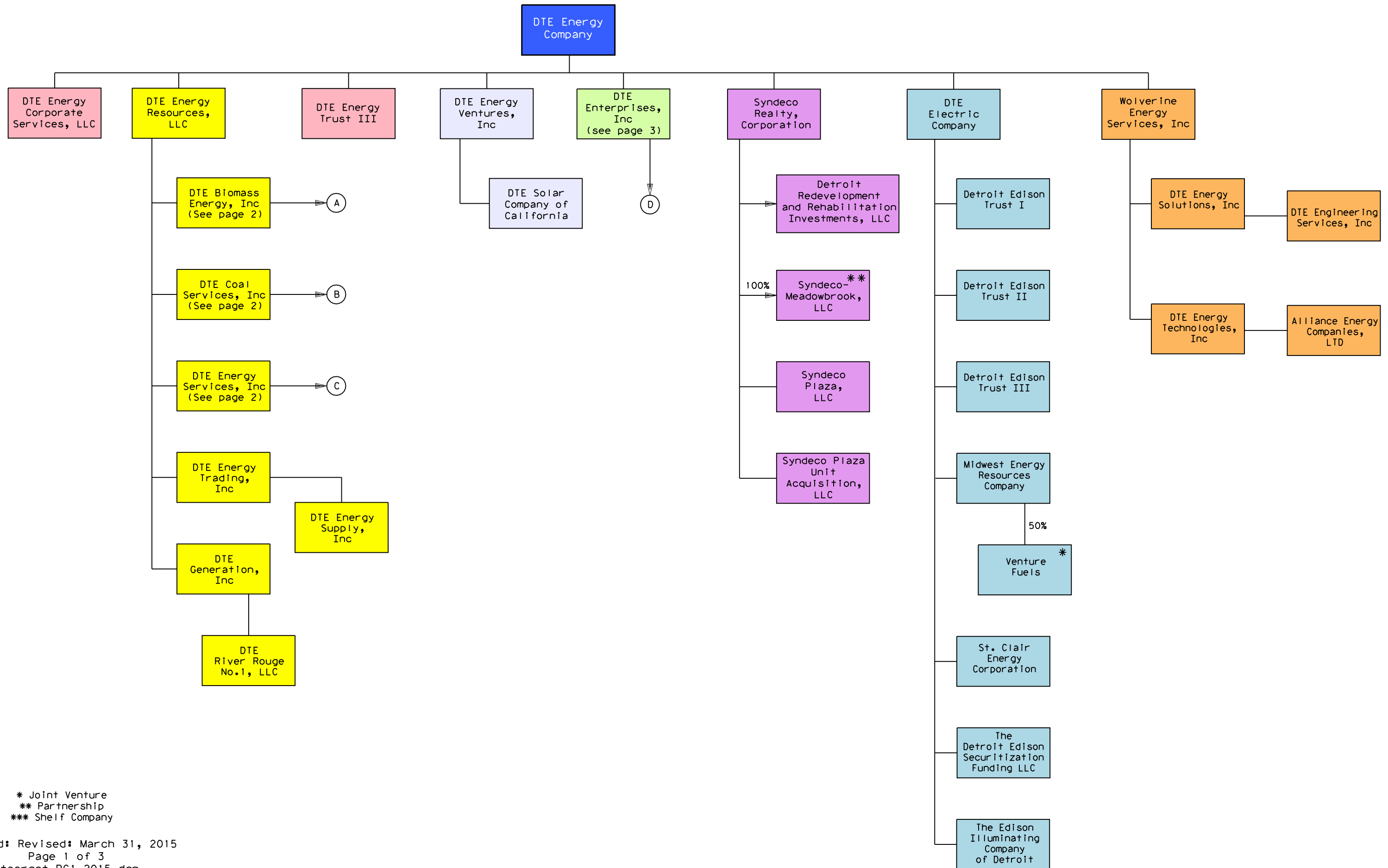
- v. W-10 Holdings, Inc., is a Michigan corporation with offices at One Energy Plaza, Detroit, Michigan 48226-1279. It is wholly owned by DTE Gas Storage Company and holds a 50% interest in Washington 10 Storage Partnership, a partnership that developed and operates the Washington 10 natural gas storage facility in southeastern Michigan.
  - vi. Washington Resources, LLC is a Michigan limited liability company with offices at One Energy Plaza, Detroit, Michigan 48226-1279, It is wholly owned by DTE Gas Storage Company.
- b. DTE Pipeline Company is a Michigan corporation with offices at One Energy Plaza, Detroit, Michigan 48226-1279. It owns interests in pipeline and processing projects directly and through the following subsidiaries and partnerships. It is wholly owned by DTEGS.
- i. Bluestone Gas Corporation of New York, Inc. is a New York corporation with offices at One Energy Plaza, Detroit, Michigan 48226. It is a wholly owned subsidiary of DTE Pipeline Company and it is engaged in natural gas gathering services.
  - ii. Bluestone Pipeline Company of Pennsylvania, LLC, (“Bluestone Pipeline”), is a Pennsylvania company with offices at One Energy Plaza, Detroit, Michigan 48226. It is a wholly owned subsidiary of DTE Pipeline Company and it is engaged in natural gas gathering services.
    - a) Susquehanna Gathering Company I, LLC, (“Susquehanna”), is a Pennsylvania company with offices at One Energy Plaza, Detroit, Michigan 48226. It is a wholly owned subsidiary of Bluestone Pipeline Company of Pennsylvania, LLC and is engaged in natural gas gathering services.
  - iii. DTE Dawn Gateway Canada Inc. is a Canadian corporation with offices at 44 Chipman Hill, Suite 1000, Saint John, New Brunswick, E2L 2A9. DTE Dawn Gateway Canada Inc. is a wholly owned subsidiary of DTE Pipeline Company.
  - iv. DTE Millennium Company is a Michigan corporation with offices at One Energy Plaza, Detroit, Michigan 48226-1279. It is wholly owned by DTE Pipeline Company. It owns a 26.25% interest in Millennium Pipeline Company, L.L.C.
    - a) Millennium Pipeline Company, L.L.C. is a Delaware limited liability company with offices at One Blue Hill Plaza, 7<sup>th</sup> Floor, P.O. Box 1565, Pearl River, New York 10965. It owns and operates the Millennium Pipeline system. DTE Millennium Company owns 26.25% of Millennium Pipeline Company, L.L.C.
  - v. DTE Vector Canada, Inc. is a New Brunswick corporation with offices at One Energy Plaza, Detroit, Michigan 48226-1279. It is wholly owned by DTE Pipeline Company. It holds a 39.6% limited partnership interest in Vector Pipeline Limited Partnership, an Alberta, Canada limited partnership which owns the Canadian portion of the Vector Pipeline.
    - a) Vector Pipeline Limited Partnership is an Alberta Canada limited partnership with offices at 38750 Seven Mile Road, Suite 490, Livonia, Michigan 48152. DTE Vector Canada, Inc. owns 39.6% of Vector Pipeline Limited Partnership and Vector Pipeline Limited owns 1%.
  - vi. DTE Vector Canada II, Inc. is a New Brunswick corporation. It is wholly owned by DTE Pipeline Company. It holds a 40% interest in Vector Pipeline Limited, which owns a 1% general partnership interest in Vector Pipeline Limited Partnership, an Alberta, Canada limited partnership which owns the Canadian portion of the Vector Pipeline.

- a) Vector Pipeline Limited is an Alberta Canada Corporation, with offices at 38705 Seven Mile Road, Suite 490, Livonia, Michigan 48152. It is owned 40% by DTE Vector Canada II, Inc., and it owns a 1% general partnership interest in Vector Pipeline Limited Partnership, an Alberta Canada limited partnership which owns the Canadian portion of the Vector Pipeline.
- vii. DTE Vector Company is a Michigan corporation with offices at One Energy Plaza, Detroit, Michigan 48226-1279. It is wholly owned by DTE Pipeline Company. It was formed to hold a 39.6% limited partnership interest in Vector Pipeline L.P., a Delaware Limited Partnership which owns and operates the Vector Pipeline.
    - a) Vector Pipeline L.P. is a Delaware limited partnership with offices at 38750 Seven Mile Road, Suite 490, Livonia, Michigan 48152. It owns and operates the Vector Pipeline. It is owned 39.6% by DTE Vector Company and 1% by Vector Pipeline, LLC.
- viii. DTE Vector II Company is a Michigan corporation with offices at One Energy Plaza, Detroit, Michigan 48226-1279. It is wholly owned by DTE Pipeline Company. It holds a 40% interest in Vector Pipeline LLC.
    - a) Vector Pipeline LLC, is a Delaware limited liability company with offices at 38750 Seven Mile Road, Suite 490, Livonia, Michigan 48152. It is owned 40% by DTE Vector II Company and owns a 1% general partnership interest in Vector Pipeline L.P., a Delaware limited partnership which owns and operates the Vector Pipeline.
- ix. DTE Michigan Gathering Holding Company is a Michigan corporation with offices at One Energy Plaza, Detroit, Michigan 48226-1279. DTE Michigan Gathering Holding Company is wholly owned by DTE Pipeline. Through the subsidiaries below, it is engaged in pipeline and gathering projects in Michigan.
    - a) CVB Pipeline, LLC is a Michigan limited liability company with offices at One Energy Plaza, Detroit, Michigan 48226-1279. It owns and operates a gas pipeline. It is owned 99% by DTE Michigan Gathering Holding Company.
    - b) DTE Michigan Gathering Company is a Michigan corporation with offices at One Energy Plaza, Detroit, Michigan 48226-1279. It owns and operates the Antrim Expansion Pipeline. It is wholly owned by DTE Michigan Gathering Holding Company.
    - c) DTE Michigan Lateral Company is a Michigan corporation with offices at One Energy Plaza, Detroit, Michigan 48226-1279. It owns and operates a 210 mile pipeline and 325 miles of gathering lines in northern Michigan. It is wholly owned by DTE Michigan Gathering Holding Company and owns 51% of Hayes Otsego Pipeline, LLC.
      - i. Hayes Otsego Pipeline, LLC, (“Hayes Otsego”), is a Michigan limited liability company with offices at One Energy Plaza, Detroit, Michigan 48226-1279. It is engaged in pipeline and gathering projects.
    - d) Saginaw Bay Pipeline Company is a Michigan corporation with offices at One Energy Plaza, Detroit, Michigan 48226-1279. It currently owns and operates a 68-mile pipeline that transports natural gas and natural gas liquids from reserves in east-central Michigan to natural gas processing plants in northern Michigan. It is wholly owned by DTE Gas.
- c. DTE Oil & Gas Group, Inc. is a Michigan corporation with offices at One Energy Plaza, Detroit, Michigan 48226-1279. It is wholly owned by MCNEE. It is engaged in natural gas and oil exploration, development and production through the following subsidiaries:

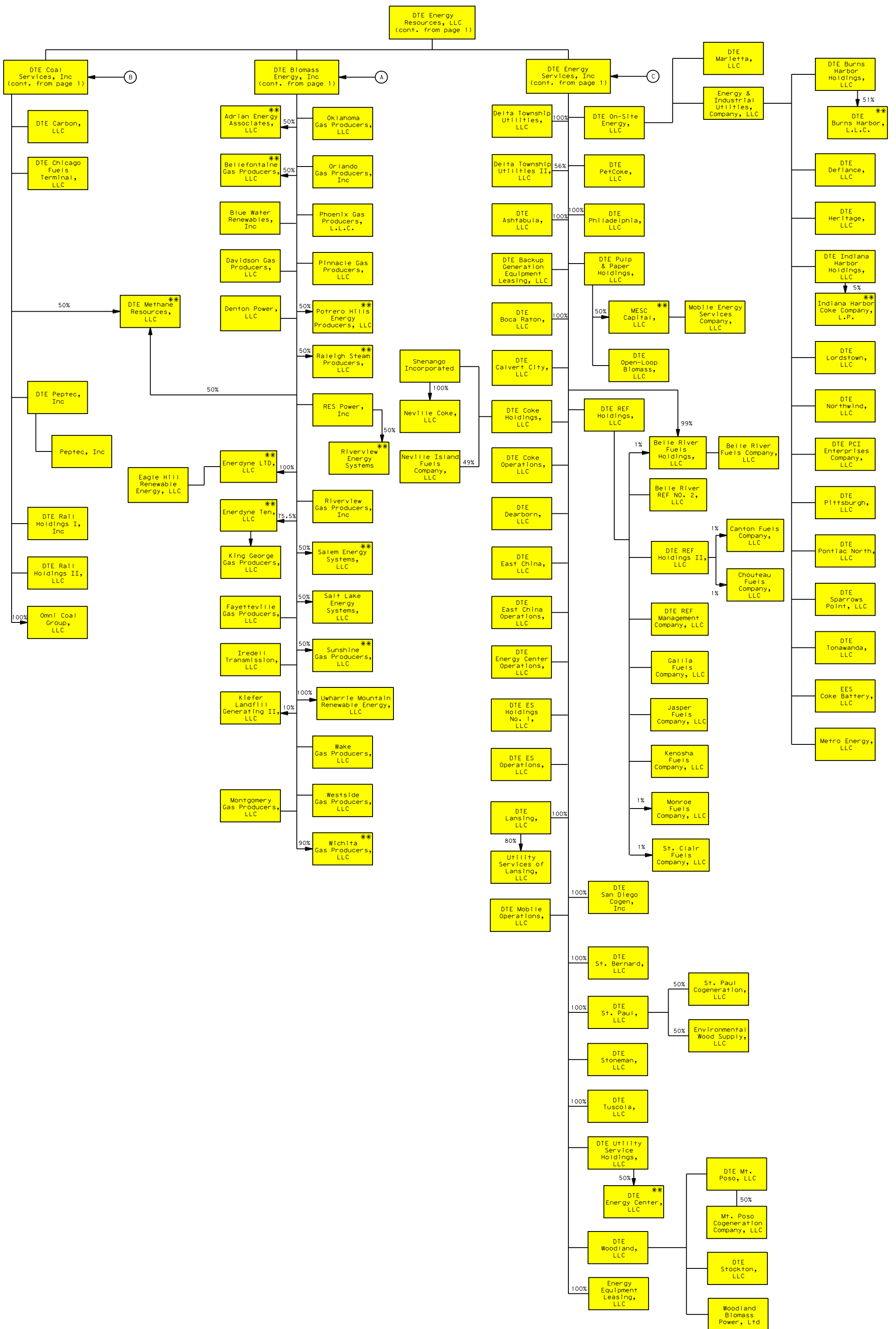
- i. MCNIC Enhanced Production, Inc. is a wholly owned subsidiary of DTE Oil & Gas Group, Inc. It owns a 75% interest in Otsego EOR, L.L.C. It is a Michigan corporation with offices at One Energy Plaza, Detroit, Michigan 48226-1279.
    - a) Otsego EOR, LLC is a Michigan limited liability company with offices at One Energy Plaza, Detroit, Michigan 48226-1279 and is owned 75% by MCNIC Enhanced Production, Inc.
  - ii. MCNIC Oil & Gas Midcontinent, Inc., a wholly owned subsidiary of DTE Oil & Gas Group, Inc. It is a Michigan corporation with offices at One Energy Plaza, Detroit, Michigan 48226-1279.
  - iii. MCNIC Oil & Gas Properties, Inc., a wholly owned subsidiary of DTE Oil & Gas Group, Inc., is a Michigan corporation with offices at One Energy Plaza, Detroit, Michigan 48226-1279.
  - iv. Otsego Exploration Company, L.L.C., a wholly owned subsidiary of DTE Oil & Gas Group, Inc., is a Michigan limited liability company with offices at One Energy Plaza, Detroit, Michigan 48226-1279.
- d. MCN International Corporation is a Michigan corporation with offices at One Energy Plaza, Detroit, Michigan 48226-1279. It was formed as a holding company for DTEE's international subsidiaries and is wholly owned by DTE Pipeline Company.
- i. MCNIC International Holdings of Grand Cayman, Cayman Islands is wholly owned by MCN International Corporation and is an inactive company
  - ii. MCNIC UAE Limited of Grand Cayman, Cayman Island is wholly owned by MCN International Corporation and was formed to hold a 39% interest in a United Arab Emirate fertilizer plant project. Subsequently, MCNIC UAE Limited converted its equity interest into a loan. The loan was sold in 2004, leaving MCNIC UAE with no remaining assets and is an F company.
- F. Syndeco Realty Corporation ("Syndeco") is a Michigan corporation with offices at One Energy Plaza, Detroit, Michigan 48226-1279. Syndeco is a wholly owned subsidiary of DTE. Syndeco is engaged in real estate projects.
- 1. Detroit Redevelopment and Rehabilitation Investments, LLC is a Michigan Company with offices at One Energy Plaza, Detroit, Michigan 48226-1289. It is a wholly owned subsidiary of Syndeco and is engaged in real estate acquisitions.
  - 2.
  - 3. Syndeco Meadowbrook, LLC ("Meadowbrook") is a Michigan limited liability company with offices at One Energy Plaza, Detroit, Michigan 48226-1279. Meadowbrook is a wholly owned subsidiary of Syndeco and owns property in Novi for future development.
  - 4. Syndeco Plaza L.L.C. ("Syndeco Plaza") is a Michigan limited liability company with offices at One Energy Plaza, Detroit, Michigan 48226-1279. Syndeco Plaza is a wholly owned subsidiary of Syndeco and is engaged real estate projects.
  - 5. Syndeco Plaza Unit Acquisition LLC ("Plaza Unit") is a Michigan limited liability company with offices at One Energy Plaza, Detroit, Michigan 48226-1279. Syndeco owns 100% of this entity.
- G. DTE Electric Company, ("DTE Electric"), is incorporated in Michigan and is a Michigan public utility. It is engaged in the generation, purchase, distribution and sale of electric energy in Southeastern Michigan. It also owned and operated a steam heating system in Detroit, Michigan, which was sold in January, 2003. On

January 1, 1996, DTE Electric became a wholly owned subsidiary of the DTE Energy Company. DTE Electric's address is One Energy Plaza, Detroit, Michigan 48226-1279.

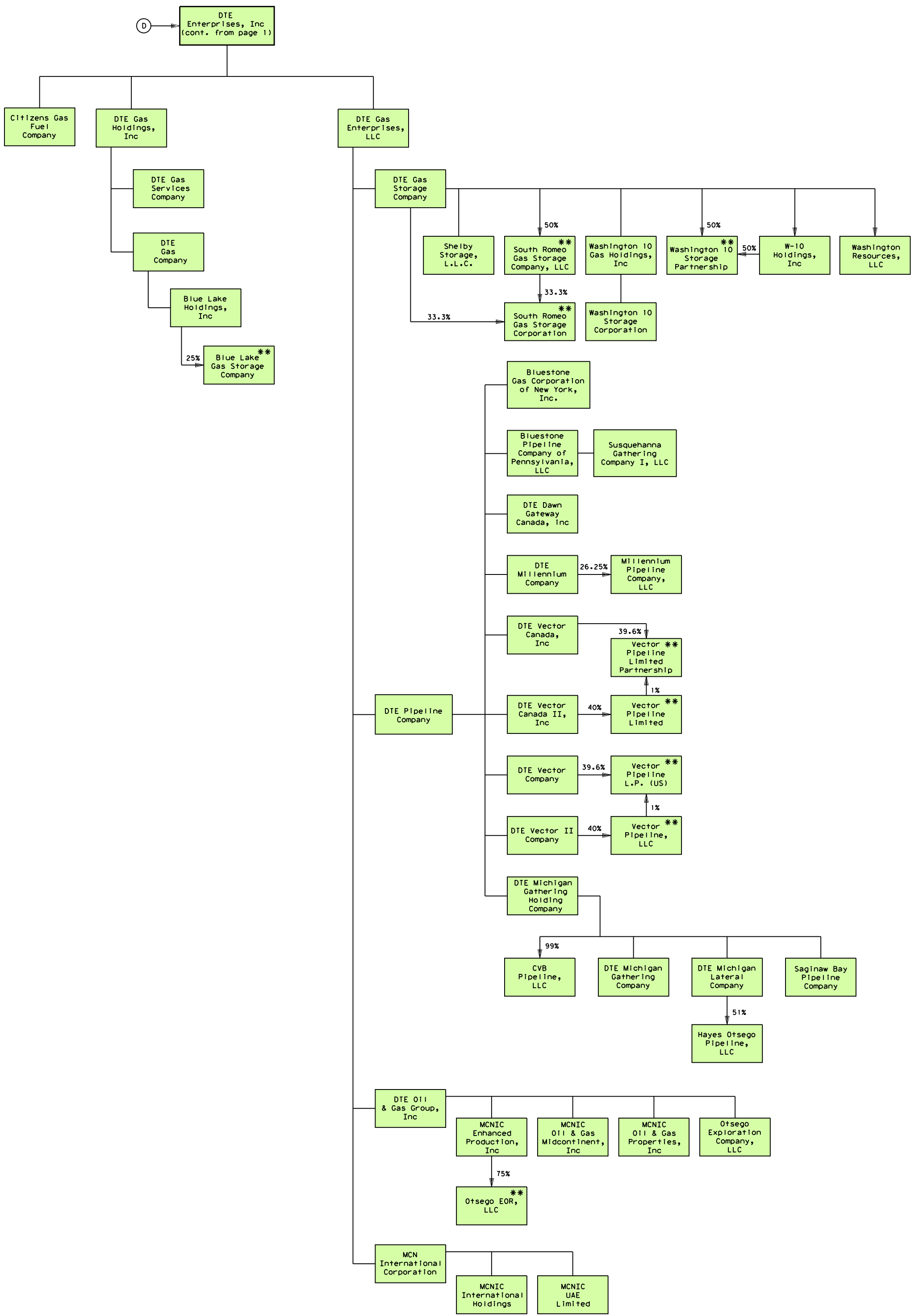
1. Detroit Edison Trust I ("DET I") is a Delaware statutory trust with offices at One Energy Plaza, Detroit, Michigan 48226-1279. DET I may offer from time to time trust preferred securities.
  2. Detroit Edison Trust II ("DET II") is a Delaware statutory trust with offices at One Energy Plaza, Detroit, Michigan 48226-1279. DET II may offer from time to time trust preferred securities.
  3. Detroit Edison Trust III ("DET III") is a Delaware statutory trust with offices at One Energy Plaza, Detroit, Michigan 48226-1279. DET III may offer from time to time trust preferred securities.
  4. Midwest Energy Resources Company ("MERC") is a Michigan corporation with offices at One Energy Plaza, Detroit, Michigan 48226-1279. MERC is a wholly owned subsidiary of DTE Electric and is engaged in operating a coal-transshipment facility in Superior, Wisconsin. It owns 50% of Venture Fuels.
    - a. Venture Fuels is a Colorado partnership formed for the purpose of marketing coal in the Great Lakes Region and is 50% owned by MERC.
  5. St. Clair Energy Corporation ("St. Clair") is a Michigan corporation with offices at One Energy Plaza, Detroit, Michigan 48226-1279. St. Clair is a wholly owned subsidiary of DTE Electric and is engaged in fuel procurement.
  6. The Detroit Edison Securitization Funding, L.L.C. ("Securitization Funding") is a Michigan limited liability company with offices at One Energy Plaza, Detroit, Michigan 48226-1279. Securitization Funding is a wholly owned subsidiary of DTE Electric and is a special purpose entity established to recover certain stranded costs, called Securitization Property by Michigan Statute.
  7. The Edison Illuminating Company of Detroit ("EIC") is a Michigan corporation with offices at One Energy Plaza, Detroit, Michigan 48226-1279. EIC is a wholly owned subsidiary of DTE Electric and holds real estate.
- H. Wolverine Energy Services, Inc. ("Wolverine") is a Michigan corporation with offices at One Energy Plaza, Detroit, Michigan 48226-1279. Wolverine is a wholly owned subsidiary of DTE Energy Company and is a holding company.
1. DTE Energy Solutions, Inc. ("Solutions") is a Michigan corporation with offices at One Energy Plaza, Detroit, Michigan 48226-1279. Solutions is a wholly owned subsidiary of Wolverine and is engaged in system based energy related products and services.
    - a. DTE Engineering Services, Inc., ("DTE Engineering Services"), is a Michigan corporation with offices at One Energy Plaza, Detroit, Michigan 48226-1279. DTE Engineering Services is a wholly owned subsidiary of Solutions. DTE Engineering Services is engaged in professional engineering services.
  2. DTE Energy Technologies, Inc. ("Technologies") is a Michigan corporation with offices at One Energy Plaza, Detroit, Michigan 48226-1279. Technologies is a wholly owned subsidiary of Wolverine and is engaged in energy solutions for industrial, commercial and small businesses.
    - a. Alliance Energy Companies, Ltd. ("Alliance") is a Minnesota corporation with offices at 1715 Lake Drive West, Chanhassen, Minnesota 55317-8580. Alliance is a wholly owned subsidiary of Technologies and is the holding company for the following entity.



\* Joint Venture  
 \*\* Partnership  
 \*\*\* Shelf Company



\* Joint Venture  
 \*\* Partnership  
 \*\*\* Shelf Company



\* Joint Venture  
 \*\* Partnership  
 \*\*\* Shelf Company