

Dear MPSC Commissioners,

I am writing in response to a public meeting held by RWE concerning their Silver Maple Solar Project.

I attended this meeting and presented the information below to show that this “200 MW solar farm” will not produce anywhere near the 200 MW advertised. As you will see from the information below it is more like 26.5 MW.

Solar panels convert sunshine into electricity and thus rely on the sun. Michigan is not the “sunshine state” and the west coast of Michigan is one of the least sunny areas of the state.

Here are the figures on the amount of sun that the state receives annually.

## According to [sunrisesunset.io](http://sunrisesunset.io)

### Amount of Sun

The **% Sun** number measures the percentage of time between sunrise and sunset that sunshine reaches the ground. These amounts are yearly averages based on many years of weather observations.

### Percent sunshine yearly in Michigan

City	% Sun
Alpena	48
Detroit	53
Grand Rapids	46
Lansing	51

The average day length throughout the year in Michigan is 12 hours and 13 minutes.

The definition of a MegaWatt = 1000 Kilowatts

At 100% efficiency a 10MW solar farm would produce 10000 Kwhs of electricity per hour, or 120,000 Kwhs over a 12 hour Michigan day.

However

According to [ussolarpanelsnetworks.com](http://ussolarpanelsnetworks.com)

And [greenbusinessbarbados.com](http://greenbusinessbarbados.com)

They state that "

- "On a sunny day with **optimal conditions** a 10 MW solar farm **may** produce approximately 30,000 kilowatt-hours (kWh) of electricity."
- That amounts to only 25% of the rated output capacity.
- Multiply that by maximum of 53% total sun in our state and you get 13.25% efficiency.
- Multiply the Zeeland solar farms 200MW rated capacity by .1325 and you get 26.5MW
- Consumers energy says that their 1900 acre 250MW solar farm in Muskegon will power around 40000 homes
- $40000 \times 13.25\% = 5300$  **"BIG Difference"**

**Obviously photovoltaic systems "OVER PROMISE AND UNDER DELIVER"**

Lets talk about grid security

**Per Reuters news agency in May of 2025**

U.S. energy officials are reportedly reassessing the security risks posed by Chinese-made components in renewable energy infrastructure after discovering hidden communication devices inside certain solar

inverters. Which would allow these devices to be remotely controlled.  
**Possible security risk!!!**

Lets talk about hazardous waste.

Per sciencedirect.com

The manufacturers of photovoltaic (PV) modules estimate that their useful life is in the range of 25–30 years [2, 3, 4, 5], after this period the modules tend to present a reduction of approximately 20% of their nominal power and, consequently, tend to be replaced and discarded, becoming waste [6,7]. According to the (**International Renewable Energy Agency**) (2016) [8], the amount of PV waste was 250,000 tons at the end of 2016, which represented only 0.1–0.6% of the total mass of installed panels (Figure 1). It is estimated that by 2030, this amount will reach between 1.7 and 8.0 million tons of discarded panels; then, by 2050, it will reach 60 to 78 million tons of PV waste.

Standard leaching tests indicate release of lead and cadmium from solar panels. **What if that gets into ground water?**

Is this the legacy we want to leave for our children?

According to data from the USDA, Ottawa County ranks as the third-highest producing agricultural areas in the state, behind Huron and Allegan. In terms of sheer economic and agricultural output, the southern Lower Peninsula counties of Michigan represent the nation's most prime agricultural lands, driven by fertile soils and favorable conditions for major crops and livestock alike.

Consumers energy's 1900 acre solar farm was built on Muskegon Wastewater management property. All the panels are in one contiguous block. **Not prime farm land!!!**

The Zeeland project is to be built along both sides of 48th Ave on a hodge podge of properties stretching from Ottogan St on the south, past Riley St on the north along I-196

I understand land owners wanting to make money on their property but is this the best use for the community? **I Don't think so!!!**

Lets compare apples to apples

Zeeland solar farm 1900 acres for 26.5MW

Palisades nuclear plant 432 acres for 800MW.

Holland BPW natural gas plant 26 acres for 145 MW

Zeeland would be better off building a conventional power plant which will produce reliable power while using far less land and producing less waste.

If solar projects are to be allowed they should be limited to landfill and other brownfield areas, not prime farm land.

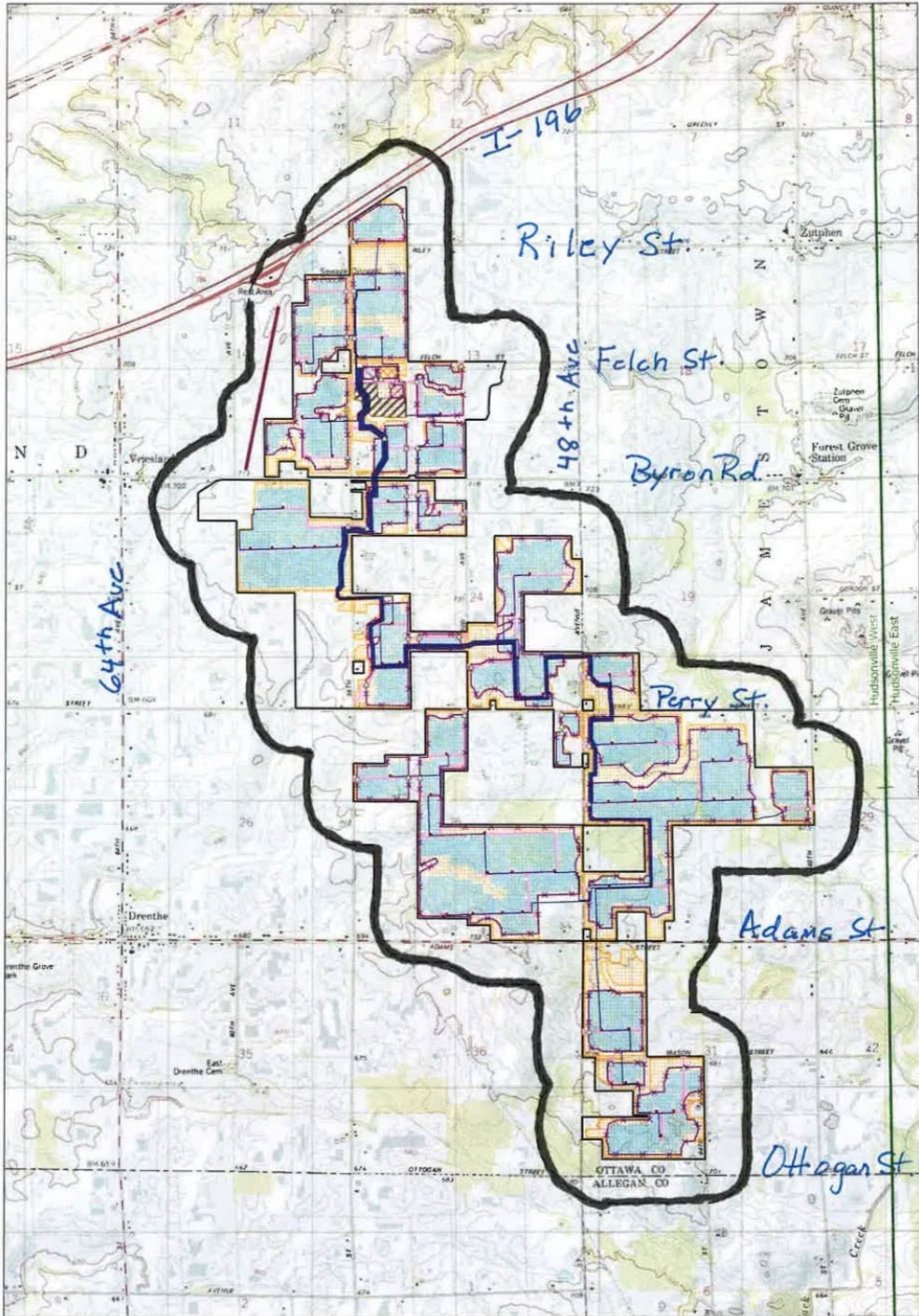
Thank you for your consideration of this information.

Sincerely

David M Dunmore

[REDACTED]

[REDACTED]



SILVER MAPLE FV LLC  
**Exhibit A-1.2**  
**Figure 2**  
**Site Location Map**  
**USGS 1:24000**

- Gate
- Access Road
- Underground Cable
- Fence
- Substation Pad
- Switchyard Pad
- O&M Pad
- Laydown Area
- Inverter Pad
- Solar Panel
- Site Plan Boundary / LOD (approximately 1,448 acres)
- Leased Area / Project Boundary (approximately 1,914 acres)
- Ottawa Executive Airport-238
- 7.5-Minute Quadrangle Boundary

Ottawa and Allegan Counties, MI  
 1925 T.V. Quadrangle  
 Hudsonville, MI, 43051-04  
 T5N 81.37N Sections 15, 20, 21  
 17N 81.66W Sections  
 12, 13, 14, 23, 24, 25, 26, 36  
 NAD 83 UTM Zone 18N  
 43 87N 85 9527W

Scale: 1:24,000  
 SWCA  
 (S) (M) (E) (N) (W) (S) (E) (N) (W)

Proposed Solar Development